

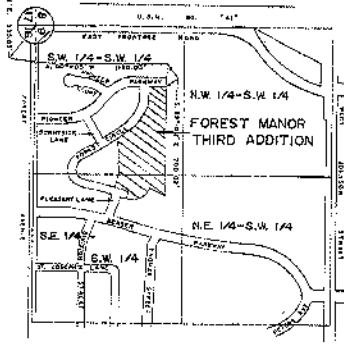
FOREST MANOR SECOND ADDITION

290693

REGISTER'S OFFICE
Fond du Lac County, Wis.
Recorded at 1:52 P.M.
JUL 26 1974
Vol. 22, Record Page 1547
GEORGE H. OTTNEY
REGISTER OF DEEDS



DATED THIS 15TH DAY OF JULY 1974.
REVISED THIS 10TH DAY OF AUGUST 1974.



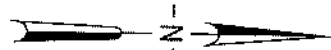
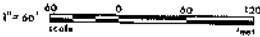
LOCATION SKETCH

LEGEND

2" x 30" Iron pipe set weighing 3.65 lbs./lin. ft.
All other lot corners staked with 1" x 24" iron pipe weighing 1.13 lbs./lin. ft.

MEASUREMENTS

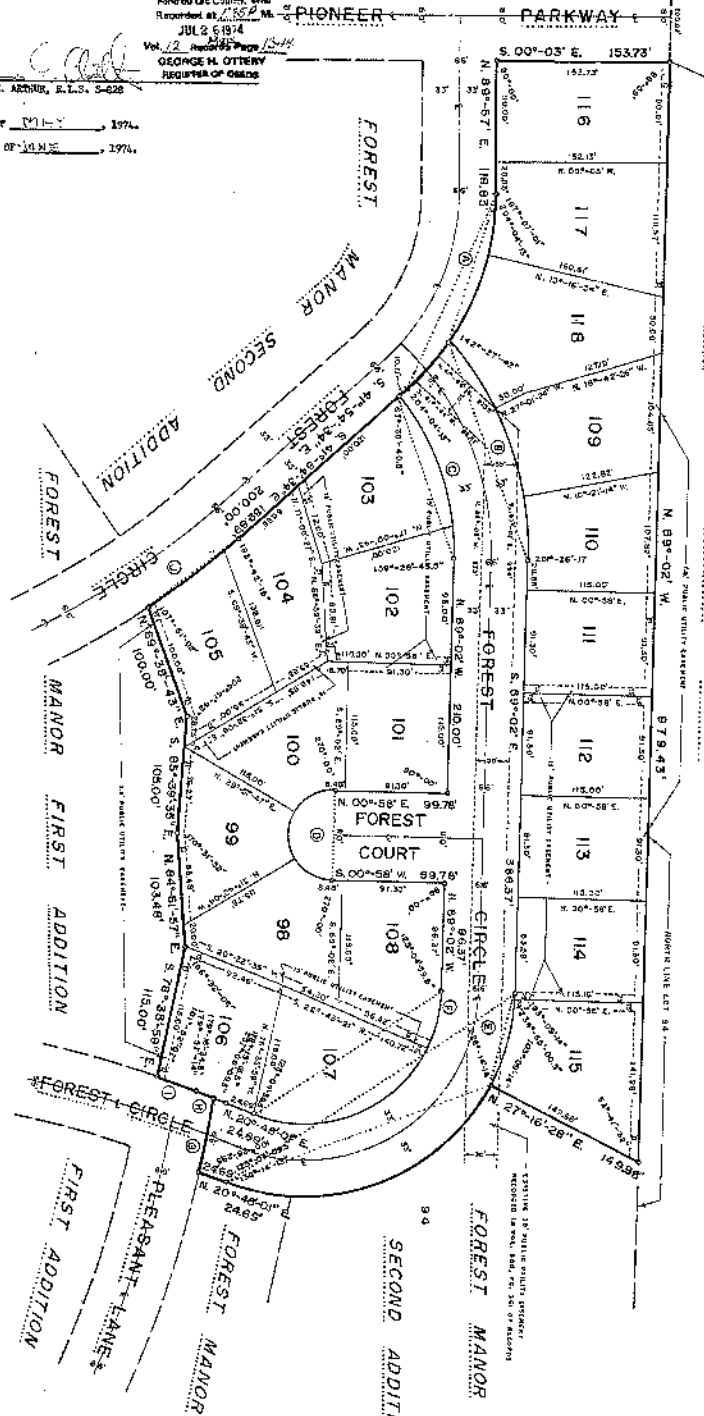
All measurements on this plat have been made to the nearest one-hundredth of a foot.



PLAT referenced to the West line of the Southwest 1/4 of Section 9, T. 15 N.-R. 17 E. (Assumed as the South)

CURVE DATA TABLE

CURVE NO.	LOT NO.	RADIUS (FEET)	CHORD LENGTH (FEET)	CURVE BEARING	CENTRAL ANGLE	ARC LENGTH	TANGENT BEARING
A	116	231.00'	159.28'	S 89°-02' W	100.00'	157.72'	S 89°-02' W
B	117	231.00'	159.28'	S 89°-02' W	100.00'	157.72'	S 89°-02' W
C	118	231.00'	159.28'	S 89°-02' W	100.00'	157.72'	S 89°-02' W
D	119	231.00'	159.28'	S 89°-02' W	100.00'	157.72'	S 89°-02' W
E	120	231.00'	159.28'	S 89°-02' W	100.00'	157.72'	S 89°-02' W
F	121	231.00'	159.28'	S 89°-02' W	100.00'	157.72'	S 89°-02' W
G	122	231.00'	159.28'	S 89°-02' W	100.00'	157.72'	S 89°-02' W
H	123	231.00'	159.28'	S 89°-02' W	100.00'	157.72'	S 89°-02' W
I	124	231.00'	159.28'	S 89°-02' W	100.00'	157.72'	S 89°-02' W
J	125	231.00'	159.28'	S 89°-02' W	100.00'	157.72'	S 89°-02' W
K	126	231.00'	159.28'	S 89°-02' W	100.00'	157.72'	S 89°-02' W
L	127	231.00'	159.28'	S 89°-02' W	100.00'	157.72'	S 89°-02' W
M	128	231.00'	159.28'	S 89°-02' W	100.00'	157.72'	S 89°-02' W
N	129	231.00'	159.28'	S 89°-02' W	100.00'	157.72'	S 89°-02' W
O	130	231.00'	159.28'	S 89°-02' W	100.00'	157.72'	S 89°-02' W
P	131	231.00'	159.28'	S 89°-02' W	100.00'	157.72'	S 89°-02' W
Q	132	231.00'	159.28'	S 89°-02' W	100.00'	157.72'	S 89°-02' W
R	133	231.00'	159.28'	S 89°-02' W	100.00'	157.72'	S 89°-02' W
S	134	231.00'	159.28'	S 89°-02' W	100.00'	157.72'	S 89°-02' W
T	135	231.00'	159.28'	S 89°-02' W	100.00'	157.72'	S 89°-02' W
U	136	231.00'	159.28'	S 89°-02' W	100.00'	157.72'	S 89°-02' W
V	137	231.00'	159.28'	S 89°-02' W	100.00'	157.72'	S 89°-02' W
W	138	231.00'	159.28'	S 89°-02' W	100.00'	157.72'	S 89°-02' W
X	139	231.00'	159.28'	S 89°-02' W	100.00'	157.72'	S 89°-02' W
Y	140	231.00'	159.28'	S 89°-02' W	100.00'	157.72'	S 89°-02' W
Z	141	231.00'	159.28'	S 89°-02' W	100.00'	157.72'	S 89°-02' W



UNPLATED LANDS

SHEET 1 OF 2 SHEETS

VOL 22 PG. 13

There are no objections to this plat with respect to Sects. 236.15, 236.16, 236.20 and 236.21(1) and (2), Statutes, or by the County Planning Agency.
Copied this 15th day of July 1974.
James E. Arthur
Director, Regional Planning & Community Affairs
Department of Local Affairs & Development

PLAT OF
"FOREST MANOR THIRD ADDITION"

LOCATED IN THE SW 1/4 OF SECTION 9, T. 15 N.-R. 17 E
CITY OF FOND DU LAC
FOND DU LAC COUNTY, WISCONSIN

